

# PROPERTY DETAILS

## FLOOR PLANS - MAIN RESIDENCE | MAIN LEVEL

1918 Forks Of The Credit Road, Caledon



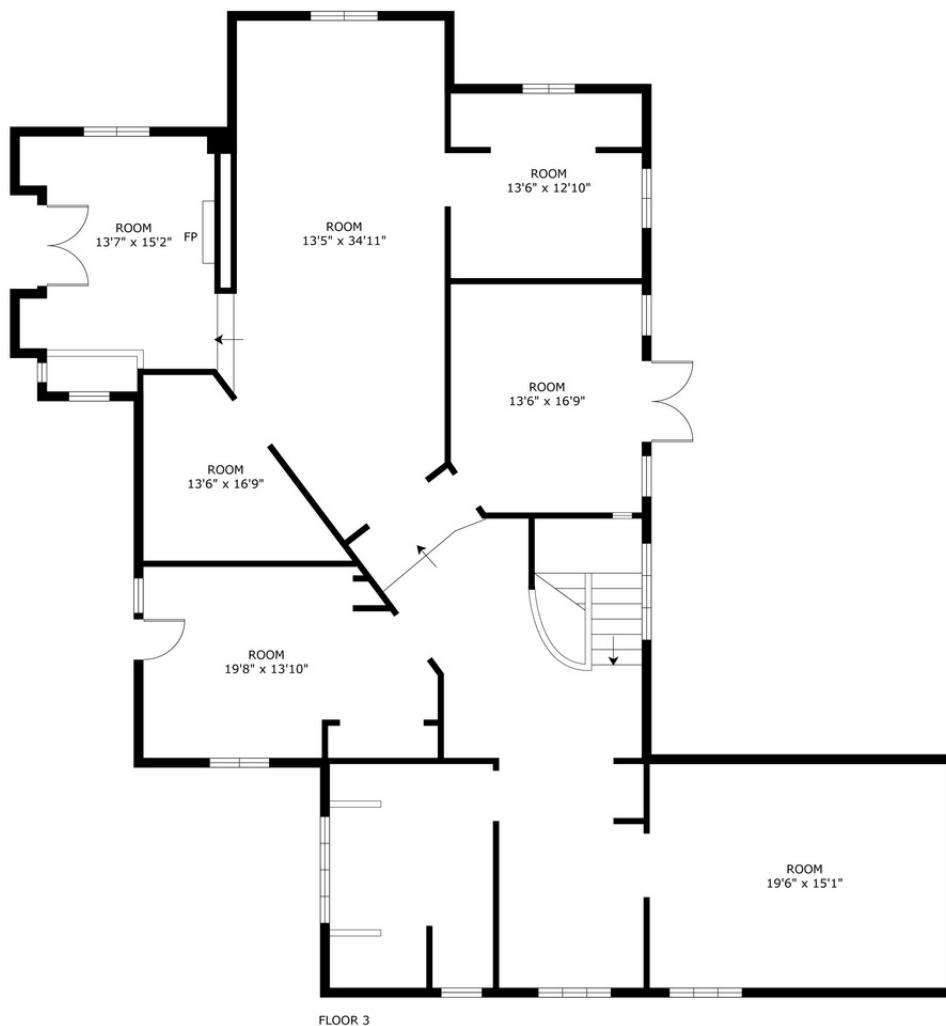
GROSS INTERNAL AREA  
FLOOR 1: 2573 sq. ft, 239 m<sup>2</sup> , FLOOR 2: 3176 sq. ft, 295 m<sup>2</sup>  
FLOOR 3: 2158 sq. ft, 200 m<sup>2</sup>, GUEST HOUSE: 1102 sq. ft, 102 m<sup>2</sup>  
TOTAL: 9009 sq. ft, 836 m<sup>2</sup>

SIZES AND DIMENSIONS ARE APPROXIMATE, ACTUAL MAY VARY.

# PROPERTY DETAILS

## FLOOR PLANS - MAIN RESIDENCE | UPPER LEVEL

1918 Forks Of The Credit Road, Caledon



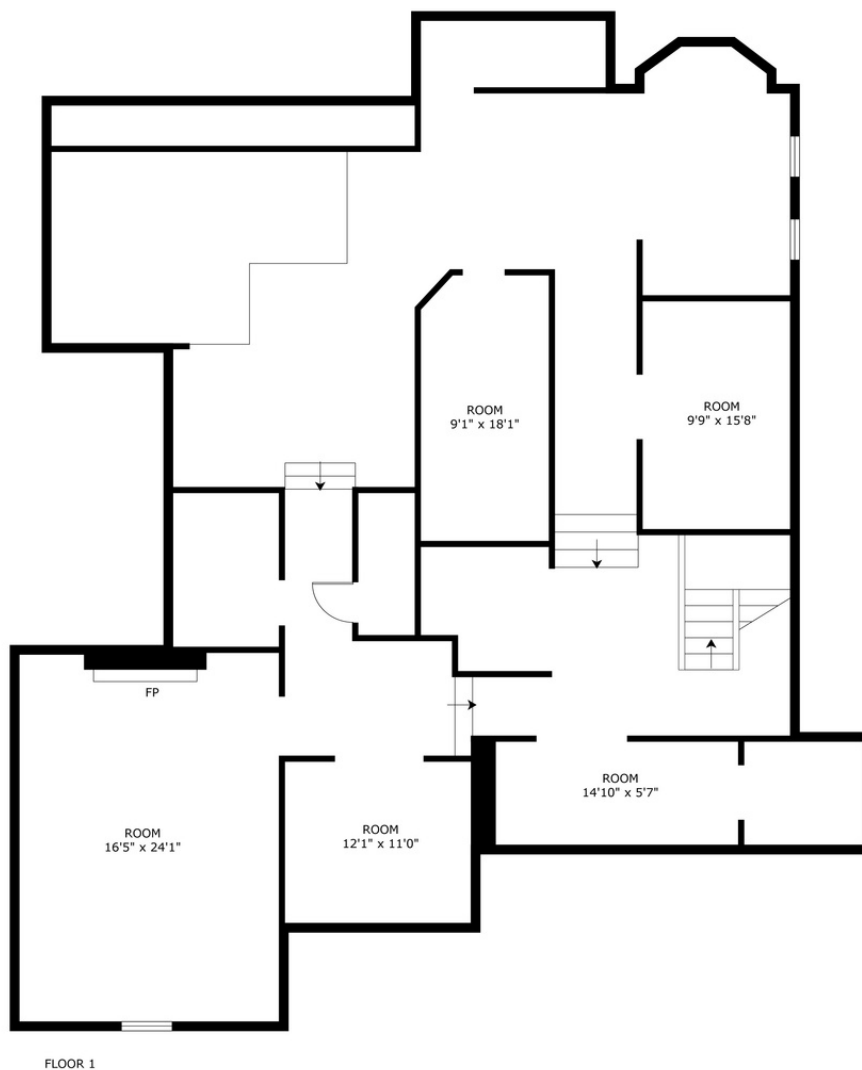
GROSS INTERNAL AREA  
FLOOR 1: 2573 sq. ft, 239 m<sup>2</sup> , FLOOR 2: 3176 sq. ft, 295 m<sup>2</sup>  
FLOOR 3: 2158 sq. ft, 200 m<sup>2</sup>, GUEST HOUSE: 1102 sq. ft, 102 m<sup>2</sup>  
TOTAL: 9009 sq. ft, 836 m<sup>2</sup>

SIZES AND DIMENSIONS ARE APPROXIMATE, ACTUAL MAY VARY.

# PROPERTY DETAILS

## FLOOR PLANS - MAIN RESIDENCE | LOWER LEVEL

1918 Forks Of The Credit Road, Caledon



### GROSS INTERNAL AREA

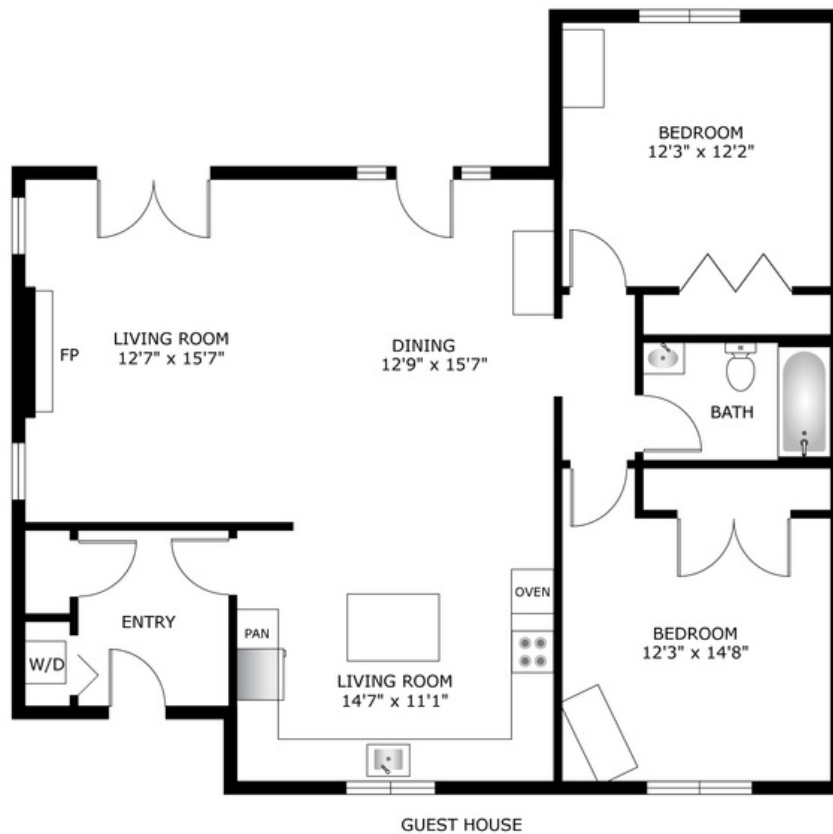
FLOOR 1: 2573 sq. ft, 239 m<sup>2</sup> , FLOOR 2: 3176 sq. ft, 295 m<sup>2</sup>  
FLOOR 3: 2158 sq. ft, 200 m<sup>2</sup>, GUEST HOUSE: 1102 sq. ft, 102 m<sup>2</sup>  
TOTAL: 9009 sq. ft, 836 m<sup>2</sup>

SIZES AND DIMENSIONS ARE APPROXIMATE, ACTUAL MAY VARY.

# PROPERTY DETAILS

## FLOOR PLANS - GUEST HOUSE

1918 Forks Of The Credit Road, Caledon



### GROSS INTERNAL AREA

FLOOR 1: 2573 sq. ft, 239 m<sup>2</sup> , FLOOR 2: 3176 sq. ft, 295 m<sup>2</sup>  
FLOOR 3: 2158 sq. ft, 200 m<sup>2</sup>, GUEST HOUSE: 1102 sq. ft, 102 m<sup>2</sup>  
TOTAL: 9009 sq. ft, 836 m<sup>2</sup>

SIZES AND DIMENSIONS ARE APPROXIMATE, ACTUAL MAY VARY.